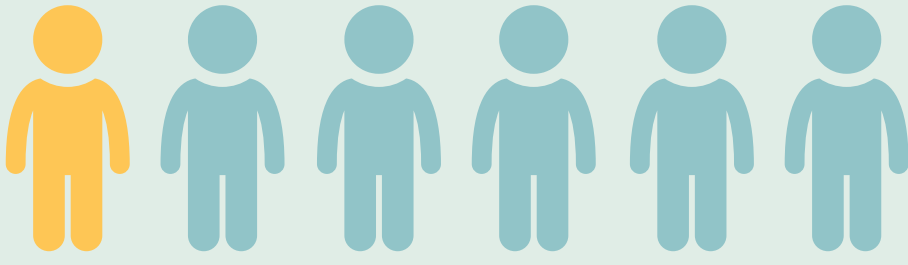


All About Developmental Disabilities

What are Developmental Disabilities?

Developmental disabilities are a group of conditions due to an impairment in physical, learning, language, or behavior areas



One in six children ages 3-17 in the U.S. have one or more developmental disabilities or other developmental delays

Types of Developmental Disabilities

ADHD

Cerebral Palsy

Learning Disability
(Disorders of Reading,
Mathematics, & Writing)

Autism Spectrum
Disorders

Other
Developmental
Delays

Intellectual
Disability

Vision Impairment

Hearing
Loss

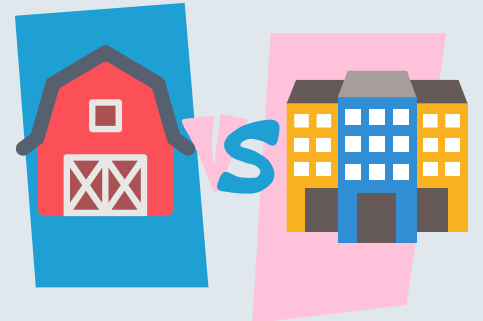
Prevalence Rates

More boys were diagnosed with a developmental disability than girls



The rate of developmental disabilities was lowest among Hispanic children

More children living in rural areas were diagnosed with developmental disorders than those living in urban areas



Causes of Developmental Disabilities

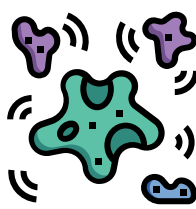
Developmental disorders can happen to anyone and usually begin before a baby is born or in early childhood due to:



Pre/Postnatal Injury



Environmental Toxin Exposure



Infection



Prenatal Alcohol or Substance Use



Genetics

Ways to Support Children with Developmental Disabilities



Early childhood identification & intervention

Coordinated health care



Special education or academic accommodations



Community support

